

DEBIX TD070H User Guide

Version: V1.0 (2024-09)

Complied by: Polyhex Technology Company Limited (<http://www.polyhex.net/>)

DEBIX TD070H is a 7-inch touch screen HDMI LCD monitor with 1024 x 600 resolution. The LCD monitor supports VGA and HDMI video signal input, power amplifier speaker and headphone output, touch operation, and remote control function. It is compatible with DEBIX series computers with HDMI ports.



Figure 1

REVISION HISTORY

Rev.	Date	Description
1.0	2024.09.10	First edition

INDEX

Chapter 1 DEBIX TD070H User Guide	4
1.1. Overview	5
1.1.1. DEBIX TD070H	5
1.1.2. DEBIX TD070H-C (with enclosure)	6
1.2. Button Setting	8
1.3. Interfaces	8
1.4. Packing List	10
Chapter 2 Getting Started	11
2.1. Menu Setting	11
2.1. FAQ	13

Chapter 1 DEBIX TD070H User Guide

DEBIX TD070H is a 7-inch touch screen HDMI LCD monitor with 1024 x600 resolution. This monitor supports VGA and HDMI video signal input, power amplifier speaker and headphone output, touch operation, and remote control function. It is compatible with DEBIX series computers with HDMI ports.

Main Features:

- VGA and HDMI signal video input
- Touch operation
- Headphone
- Power amplifier speaker
- Remote control function
- No-signal automatic power off function

1.1. Overview

1.1.1. DEBIX TD070H:

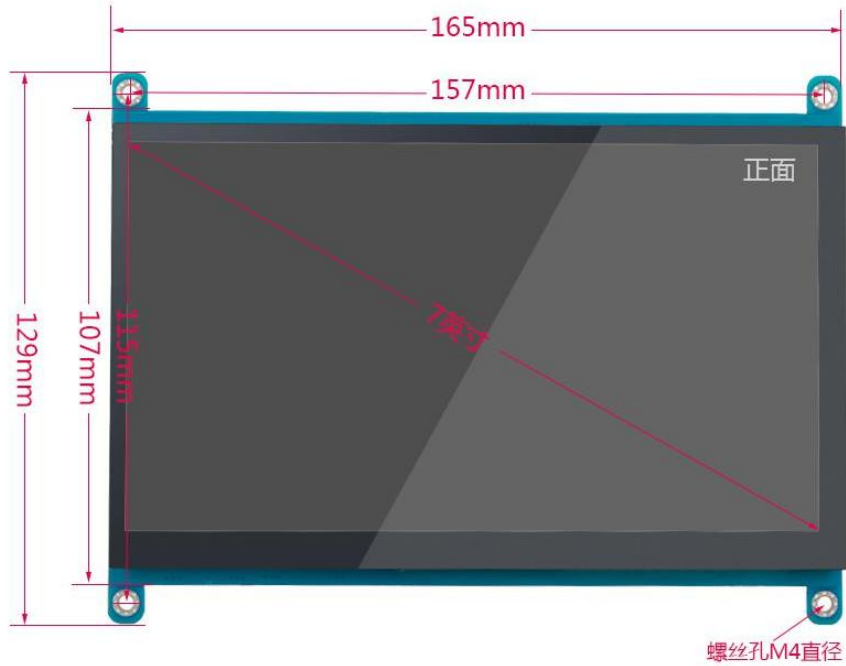


Figure 2 DEBIX TD070H Front View

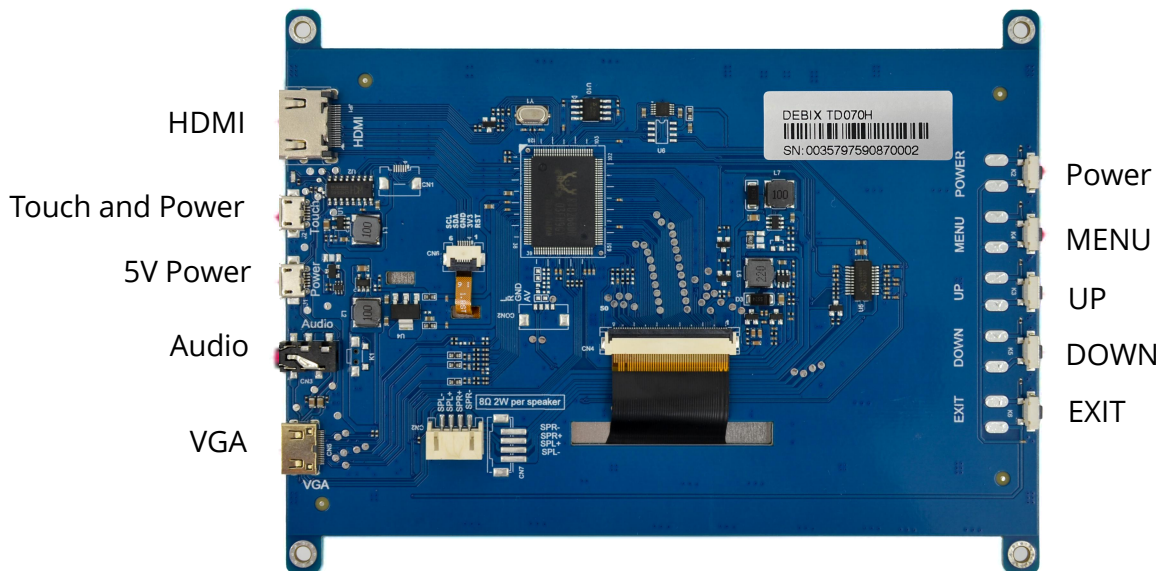


Figure 3 DEBIX TD070H Back View & Interfaces

1.1.2. DEBIX TD070H-C (with enclosure):

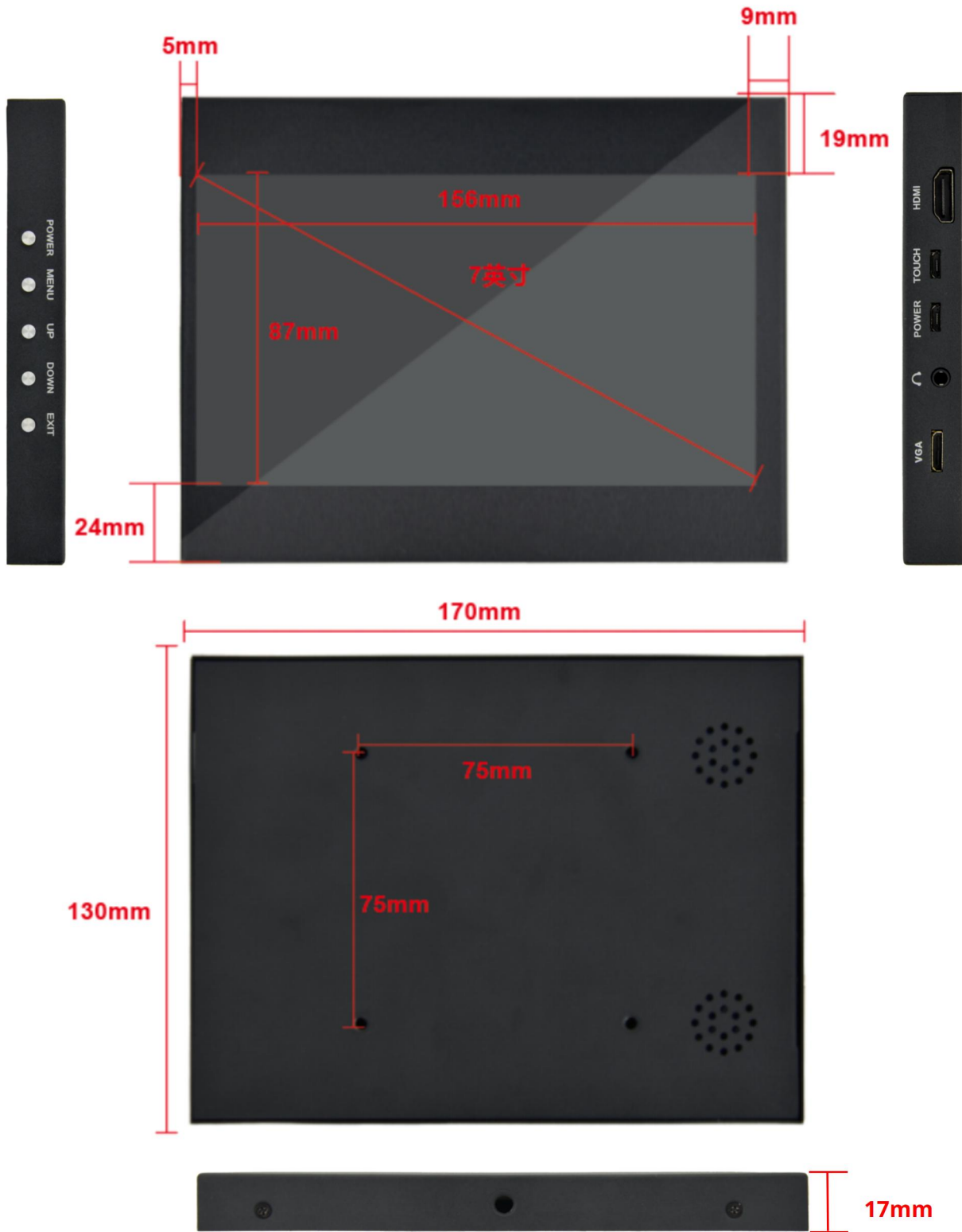




Figure 4 DEBIX TD070H-C (with enclosure)

DEBIX TD070H supports VGA and HDMI video signal input, touch operation, remote control function, etc. The data specification are as below.

Table 1 DEBIX TD070H Specification

DEBIX TD070H Specification	
LCD 尺寸	7 inches
Resolution	1024 x 600
Active Area	155.00mm x 87.00mm
Outline Dimension (DEBIX TD070H-C)	170.00mm x 131.00mm x 17.00mm
Touch Operation	1 x Micro USB
Optional Function	(1) Power amplifier speaker (2) Remote control function
Operating Temp.	-10°C~60°C

Storage Temp.	-20°C~70°C
Operating Humidity	90%RH (no condensation)
Input Voltage	DC 5V
Net Weight	214g (±0.5g)
Net Weight (DEBIX TD070H-C)	510g (±0.5g)

1.2. Button Setting

The buttons of the DEBIX TD070H LCD monitor is composed of POWER, MENU, UP, DOWN, EXIT. The detailed button setting are as below.

Table 2 DEBIX TD070H Button Setting

Button	Description
POWER	Power switch button. In the off state, press the POWER button to turn on the LCD monitor. In the power-on state, press the POWER button to shut it down.
MENU	Menu button. Press the MENU button once to bring up the menu window. Then press again to confirm the selection.
UP	Up/left button. Press the UP button to increase the volume.
DOWN	Down/right button. Press the DOWN button to decrease the volume.
EXIT	Return or exit button.

1.3. Interfaces

The interfaces of the DEBIX TD070H are shown as below.

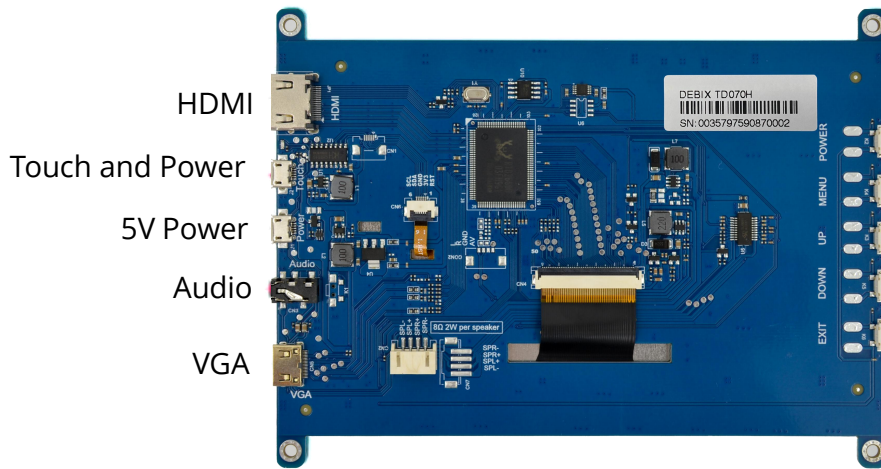


Figure 5 DEBIX TD070H Interfaces

The interfaces of the DEBIX TD070H-C are shown as below.



Figure 6 DEBIX TD070H-C interfaces

The interfaces are described as below.

Table 3 Interfaces Description

Interface	Description
VGA	Mini-HDMI package interface. For using this VGA interface, it requires a cable for converting VGA signal to mini-HDMI signal.
HDMI	Standard HDMI interface. (The screen will not light up without connecting a signal source)
TOUCH	The TOUCH interface connector is a micro-USB port. This interface is a two-in-one interface for touch operation and power supply. The work indicator will light up when connecting this interface. The standard input is 5V2A.

AUDIO	The AUDIO interface connector is a standard 3.5mm headphone jack.
POWER	The POWER interface connector is a micro-USB port. The standard input is 5V2A. (standby power port)

1.4. Packing List

(1) The packing list of the DEBIX TD070H:

- 1 x DEBIX TD070H
- 1 x HDMI cable
- 1 x Micro USB to USB-A cable

(2) The packing list of the DEBIX TD070H-C (with enclosure):

- 1 x DEBIX TD070H-C (with enclosure)
- 1 x HDMI cable
- 1 x Micro USB to USB-A cable
- 1 x Display holder

Chapter 2 Getting Started

2.1. Menu Setting

After pressing the MENU button, you can set the four parameter categories of color, menu, function and sound. Among them, there are 10 languages that can be set in the menu category: English, Simplified Chinese, French, German, Spanish, Traditional Chinese, Korean, Russian, Italian and Japanese. (The device automatically recognizes the signal by default, no special setting is required.)

The details are shown as below:



Figure 7

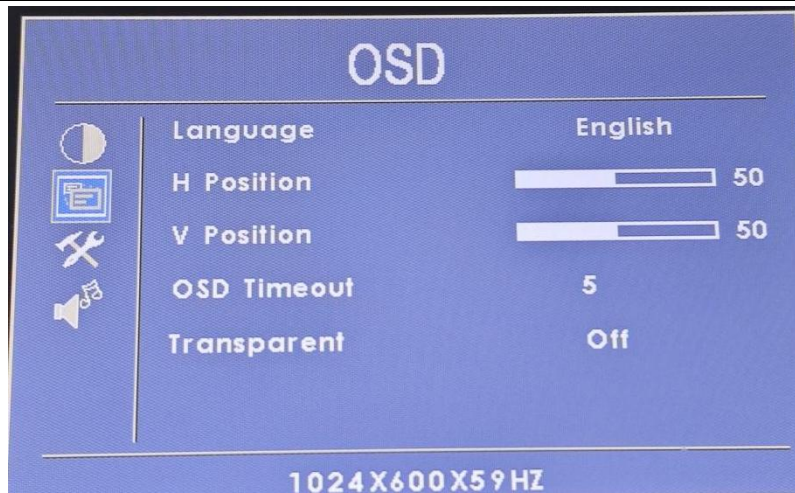


Figure 8

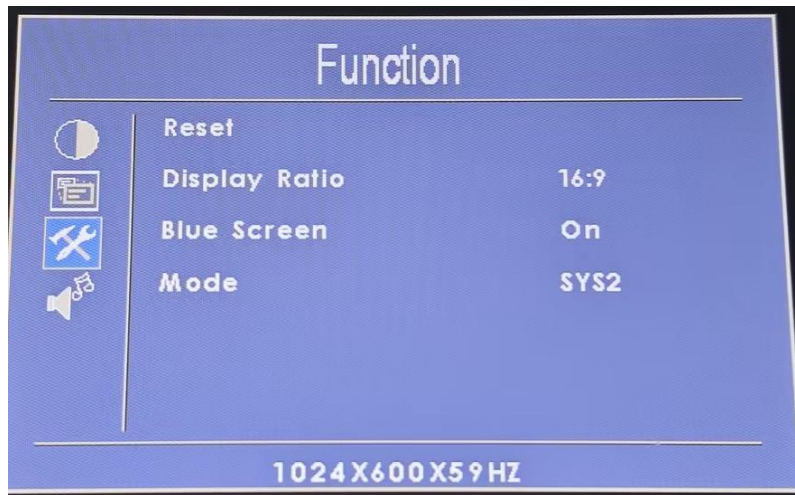


Figure 9



Figure 10

2.1. FAQ

Q1: How do I turn it on when it still shows a black screen after powering up?

A1: When powered on, the display will turn on naturally. If the screen is still black, there is no signal input. Line connection order: (1) Connect the micro USB to the touch interface of the screen; (2) Connect HDMI cable or VGA cable.

Q2: What should I do if I have connected an HDMI or VGA signal cable after powering it up and it still shows a black screen?

A2: First, make sure that there is no problem with the power cable connection, and the indicator light at the touch interface shows blue, which means it is normal. Then, check whether the connected signal source device is turned on and whether there is a normal display signal output. Finally, check whether there is any problem with the data cable, HDMI cable or VGA cable, and check whether there is any problem such as bad contacts at the interface.

Q3: I bought a touch screen monitor, but why is there no response when I touch the screen?

A3: First consult the customer service about the system version supported by the touch function. Then check whether the micro USB cable is connected to the touch interface of the screen, and whether the other end is connected to the USB output port of the device (such as a computer). If these two steps are correct, it may be that the power supply of the USB interface of the device is insufficient, please add another 5V2A power supply connect to the power interface.

Q4: There is sound after the headset is connected, but why is there no sound when the monitor plays alone?

A4: Our products do not have built-in speakers by default. If you need to add speakers, please inform customer service in advance.